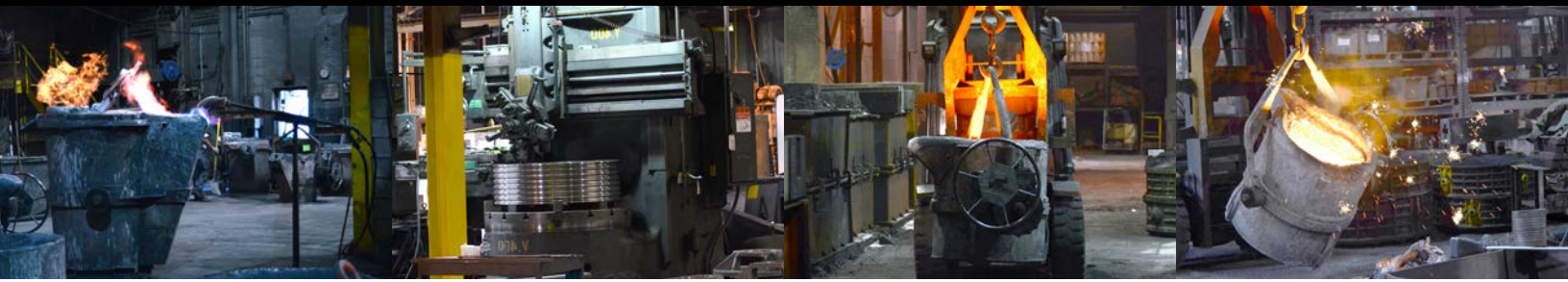




**Foundry  
Operations  
Gray &  
Ductile Iron  
Castings**



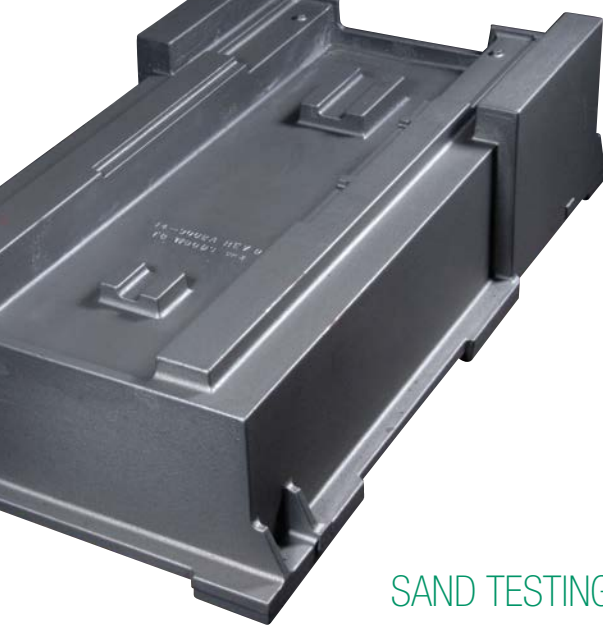
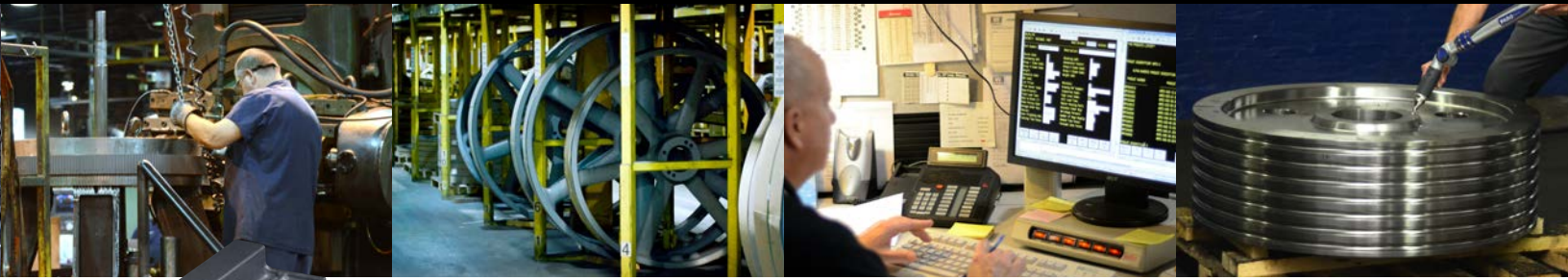
## POURING IRON SINCE 1857

Sure, the pour is the hot, photogenic moment. Behind that scene, though, you need to know if your casting source can deliver the precision, quality, service and engineering that gives your company a competitive edge.

For generations, TB Wood's has developed the technical expertise and staff to design, mold, and machine gray and ductile iron castings that have held up in some of the most demanding environments. From military to industrial, marine to machine tool and far beyond, TB Wood's castings are found in applications worldwide.

TB Wood's ISO 9001 registered foundry and machining operations are capable of producing parts up to 10,000 pounds per cast part. In addition, our complete to print capabilities, our quality control procedures (including CMM, gage calibration, and solidification modeling), and our proven delivery system, enable us to satisfy most casting requirements quickly and efficiently, on-time and on-budget.





2800 lb.  
CNC Machine Base

900 lb.  
Milling Machine Column



## SAND TESTING AND CONTROL

Specialized engineering, testing and control of molding sand is essential to the production of quality gray and ductile iron castings. TB Wood's engineers and technicians utilize the following tests and procedures to meet our stringent quality standards:

- Green Strength
- Methylene Blue
- Compactability
- Moisture
- Grain Fineness
- Acid Demand Value
- Automatic Bond Determinator
- Automatic Moisture Control
- Automatic Batch Testing
- Automatic Adjustments
- Computerized SPC

## METALLURGICAL TESTING

Inherent in the integrity of our component parts are their metallurgical properties. Comprehensive testing services ensure our products meet your most demanding specifications.

- Spectrometer
- Computerized SPC
- Hardness Testing
- Carbon Determinator
- Microstructure Analysis
- In-House Testing of Test Bars



**ISO 9001**  
CERTIFIED

## TB Wood's Facilities

### North America

#### USA

440 North Fifth Avenue  
Chambersburg, PA 17201 - USA  
888-829-6637 • 717-264-7161

*Belted Drives and Elastomeric Couplings*

#### Customer Service

1-888-829-6637

#### Application Support

1-888-829-6637

2000 Clovis Barker Road  
San Marcos, TX 78666 - USA  
1-888-449-9439

*General Purpose Disc Couplings*

#### Customer Service

1-888-449-9439

4970 Joule St  
Reno, NV 89502 - USA  
775-857-1800

#### Canada

12759 149 Street NW  
Edmonton, AB T5L 4M9 - Canada  
1-800-829-6631

1070 Mid Way Blvd  
Units 11-14  
Mississauga, ON L5T 1T4 - Canada  
1-800-829-6631

1073 Rue Bégin  
Saint-Laurent, QC H4R 1V8 - Canada  
+1 514-332-4812

#### Mexico

Comisión Federal de Electricidad 850,  
Industrial San Luis,  
San Luis, S.L.P., 78395 - Mexico  
+52 444 137 1500

### Europe

Merchant Drive, Hertford  
Hertfordshire SG13 7BL - England  
+44(0)1992 501900

*Elastomeric Couplings*

## The Brands of Altra Motion

### Couplings

**Ameridrives**  
www.ameridrives.com

**Bibby Turboflex**  
www.bibbyturboflex.com

**Guardian Couplings**  
www.guardiancouplings.com

**Huco**  
www.huco.com

**Lamiflex Couplings**  
www.lamiflexcouplings.com

**Stromag**  
www.stromag.com

**TB Wood's**  
www.tbwoods.com

### Linear Systems

**Thomson**  
www.thomsonlinear.com

### Geared Cam Limit Switches

**Stromag**  
www.stromag.com

### Engineered Bearing Assemblies

**Kilian**  
www.kilianbearings.com

### Electric Clutches & Brakes

**Matrix**  
www.matrix-international.com

**Stromag**  
www.stromag.com

**Warner Electric**  
www.warnerelectric.com

### Belted Drives

**TB Wood's**  
www.tbwoods.com

### Heavy Duty Clutches & Brakes

**Twiflex**  
www.twiflex.com

**Stromag**  
www.stromag.com

**Svendborg Brakes**  
www.svendborg-brakes.com

**Wichita Clutch**  
www.wichitaclutch.com

### Gearing & Specialty Components

**Bauer Gear Motor**  
www.bauergears.com

**Boston Gear**  
www.bostongear.com

**Delevan**  
www.delevan.com

**Delroyd Worm Gear**  
www.delroyd.com

**Nuttall Gear**  
www.nuttallgear.com

### Precision Motors & Automation

**Kollmorgen**  
www.kollmorgen.com

### Miniature Motors

**Portescap**  
www.portescap.com

### Overrunning Clutches

**Formsprag Clutch**  
www.formsprag.com

**Marland Clutch**  
www.marland.com

**Stieber**  
www.stieberclutch.com

Neither the accuracy nor completeness of the information contained in this publication is guaranteed by the company and may be subject to change in its sole discretion. The operating and performance characteristics of these products may vary depending on the application, installation, operating conditions and environmental factors. The company's terms and conditions of sale can be viewed at <http://www.altramotion.com/terms-and-conditions/sales-terms-and-conditions>. These terms and conditions apply to any person who may buy, acquire or use a product referred to herein, including any person who buys from a licensed distributor of these branded products.

©2022 by TB Wood's LLC. All rights reserved. All trademarks in this publication are the sole and exclusive property of TB Wood's LLC or one of its affiliated companies.

